

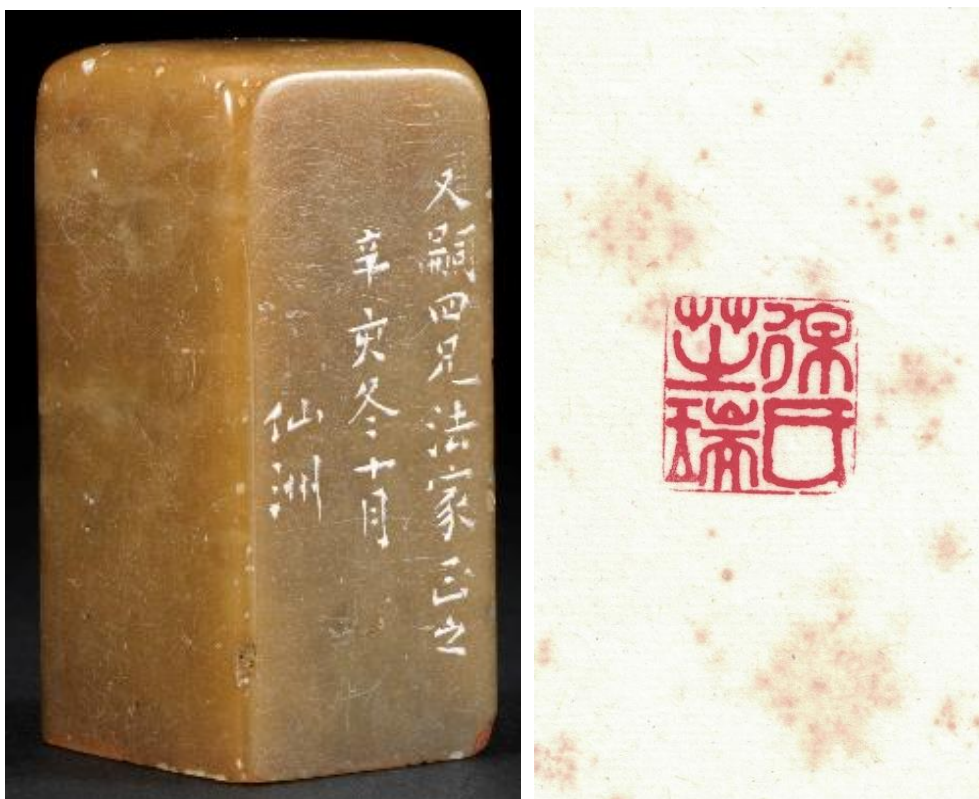
广东、入粤、居港、旅港印人
Seal carvers originated from, travelling to or living in Guangdong or Hong Kong

黄倬瀛（活跃于清末民初）

黄倬瀛，广东澄海人。生年不确，约活动于清末民初年间。字仙洲。长于山水画，篆刻宗汉法，庄严稳重。

HUANG Zhuoying (active between the late Qing and early Republican periods)

Huang Zhuoying (dates unknown; active between the late Qing and early Republican periods), a native of Chenghai, Guangdong, courtesy name Xianzhou, was accomplished in landscape painting and seal carving. His seals follow the Han tradition to generate feelings of solemnity.



C1994.0167

平头钮方形四字朱文印

Square Seal with Four Characters Carved in Relief

近现代（1911）

Modern period (1911)

黄倬瀛

HUANG Zhuoying

石（青田）

Stone (Qingtian)

印文： 徐氏芝瑞

Seal characters: Xu shi Zhirui

尺寸： 纵：2.1 厘米
横：2.1 厘米
高：4.5 厘米

Size: W: 2.1 cm
L: 2.1 cm
H: 4.5 cm